



**19 ANGUS CLOSE
CHESSINGTON
KT9 2BW
£425,000**

EXTENDED TERRACED HOUSE

THREE BEDROOMS

14'10 X 14'7 LIVING ROOM

14'1 X 9'1 KITCHEN DINING ROOM

14'1 X 9'7 CONSERVATORY

SHOWER ROOM

DOUBLE GLAZED WINDOWS

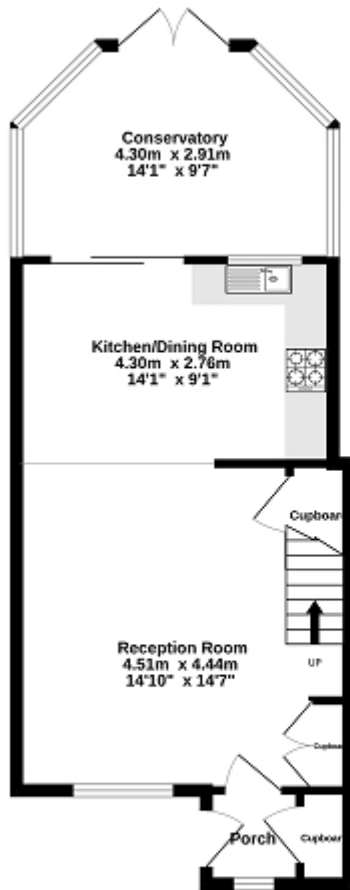
GAS CENTRAL HEATING

25' REAR GARDEN

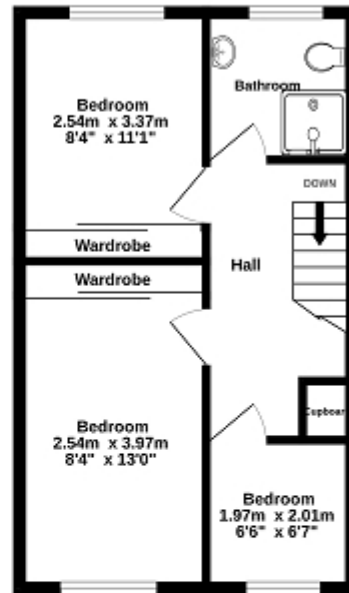
GARAGE IN BLOCK

CUL DE SAC LOCATION

Ground Floor
46.7 sq.m. (503 sq.ft.) approx.



1st Floor
33.5 sq.m. (361 sq.ft.) approx.



TOTAL FLOOR AREA : 80.2 sq.m. (863 sq.ft.) approx.

Whilst every attempt has been made to ensure the accuracy of the floorplan contained herein, measurements of doors, windows, rooms and any other items are approximate and no responsibility is taken for any error, omission or mis-statement. This plan is for illustrative purposes only and should be used as such by any prospective purchaser. The services, systems and appliances shown have not been tested and no guarantee as to their operability or efficiency can be given.
Made with Intelligo (2020)

Energy Efficiency Rating

| | Current | Potential |
|--|---------|-----------|
| Very energy efficient - lower running costs | | |
| (92+) A | | |
| (81-91) B | | |
| (69-80) C | 74 | 80 |
| (55-68) D | | |
| (39-54) E | | |
| (21-38) F | | |
| (1-20) G | | |
| Not energy efficient - higher running costs | | |
| England, Scotland & Wales EU Directive 2002/91/EC | | |

The energy efficiency rating is a measure of the overall efficiency of a home. The higher the rating the more energy efficient the home is and the lower the fuel bills will be.