



**11A CHESHIRE GARDENS
CHESSINGTON
KT9 2PR
£365,000**

GROUND FLOOR MAISONETTE

TWO DOUBLE BEDROOMS

14' X 10'10 LIVING ROOM

12'6 X 7' KITCHEN DINER

MODERN WHITE BATHROOM SUITE

DOUBLE GLAZED WINDOWS

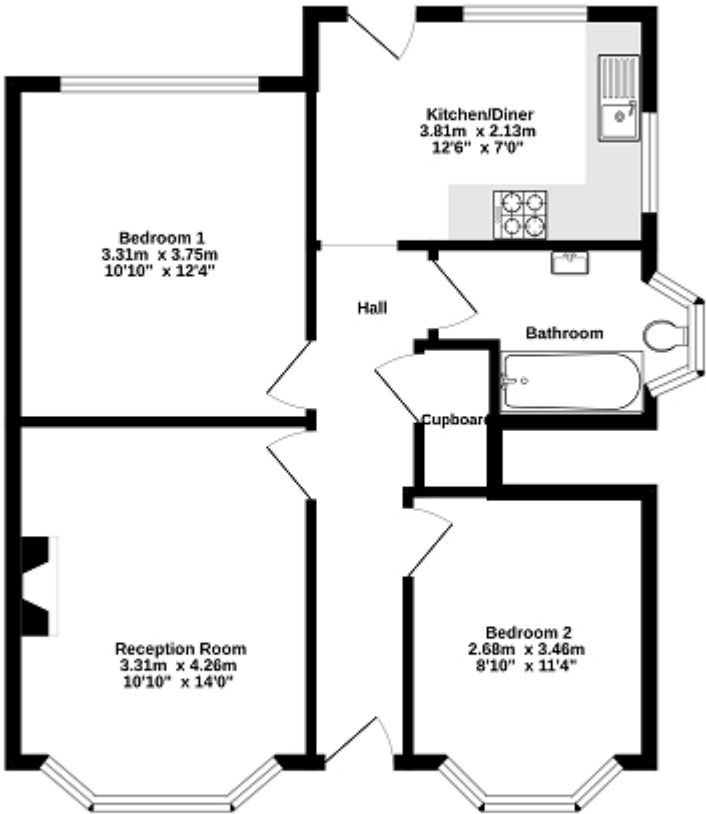
GAS CENTRAL HEATING

31' X 25' EASTERLY FACING REAR GARDEN

WELL PRESENTED


AN IDEAL FIRST TIME BUY

Ground Floor
62.0 sq.m. (667 sq.ft.) approx.



TOTAL FLOOR AREA: 62.0 sq.m. (667 sq ft.) approx.
Whilst every effort has been made to ensure the accuracy of the floorplate contained herein, measurements of doors, windows, rooms and any other items are approximate and no responsibility is taken for any error, omission or mis-statement. This plan is for guidance purposes only and should be used in such by any prospective purchaser. The services, options and appliances shown have not been tested and no guarantee as to their availability or efficiency can be given.
Made with Metaphor 12/2020



| Energy Efficiency Rating | | |
|---|---------|-----------|
| | Current | Potential |
| Very energy efficient - lower running costs | | |
| (92+) A | | |
| (81-91) B | | |
| (69-80) C | 70 | 75 |
| (55-68) D | | |
| (39-54) E | | |
| (21-38) F | | |
| (1-20) G | | |
| Not energy efficient - higher running costs | | |
| England, Scotland & Wales EU Directive 2002/91/EC  | | |

The energy efficiency rating is a measure of the overall efficiency of a home. The higher the rating the more energy efficient the home is and the lower the fuel bills will be.