



**2 HAZELBANK COURT
CHURCH LANE
CHESSINGTON
KT9 2EH
OFFERS IN EXCESS OF
£240,000**

GROUND FLOOR FLAT

11'3 X 10'3 BEDROOM

10'10 X 7'3 MODERN KITCHEN

MODERN BATHROOM

GAS CENTRAL HEATING

DOUBLE GLAZED WINDOWS

COMMUNAL GARDENS

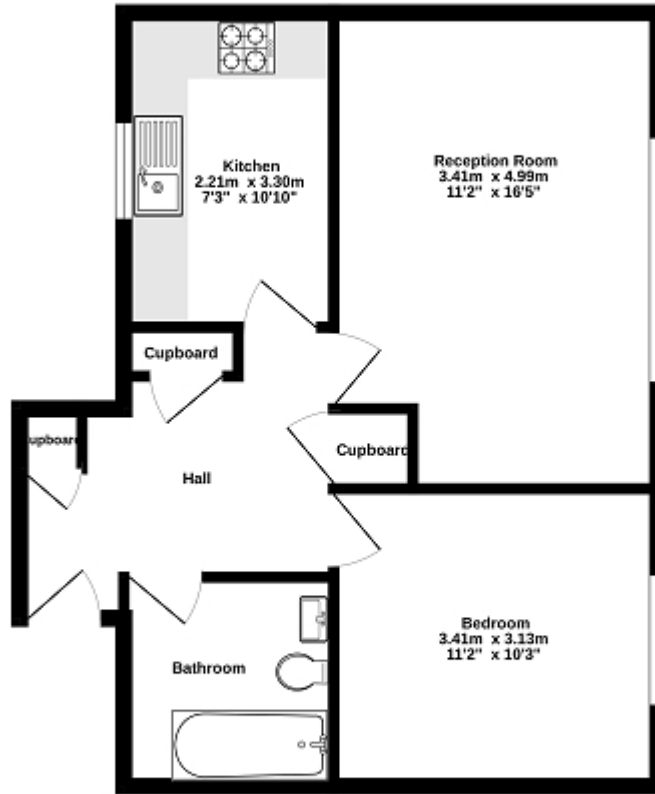
GARAGE IN BLOCK

WELL PRESENTED

NO FORWARD CHAIN



Ground Floor
48.0 sq.m. (516 sq.ft.) approx.



TOTAL FLOOR AREA: 48.0 sq.m. (516 sq.ft.) approx.

While every attempt has been made to ensure the accuracy of the floorplan contained herein, measurements of doors, windows, rooms and any other items are approximate and no responsibility is taken for any error, omission or misstatement. This plan is for illustrative purposes only and should be used as such by any prospective purchaser. The services, systems and appliances shown have not been tested and no guarantee as to their operability or efficiency can be given.
Made with Metloplan 6/2019



Energy Efficiency Rating

	Current	Potential
Very energy efficient - lower running costs		
(92+) A		
(81-91) B		
(69-80) C		74
(55-68) D	67	
(39-54) E		
(21-38) F		
(1-20) G		
Not energy efficient - higher running costs		
England, Scotland & Wales EU Directive 2002/91/EC		

The energy efficiency rating is a measure of the overall efficiency of a home. The higher the rating the more energy efficient the home is and the lower the fuel bills will be.