



**11 MAY CLOSE
CHESSINGTON
SURREY
KT9 2AP
£300,000**

SPLIT LEVEL MAISONETTE

TWO BEDROOMS

15'5 X 12'10 MAX L-SHAPED LIVING ROOM

11'2 X 6'7 MODERN KITCHEN

DOUBLE GLAZED WINDOWS

GAS CENTRAL HEATING

OWN REAR GARDEN

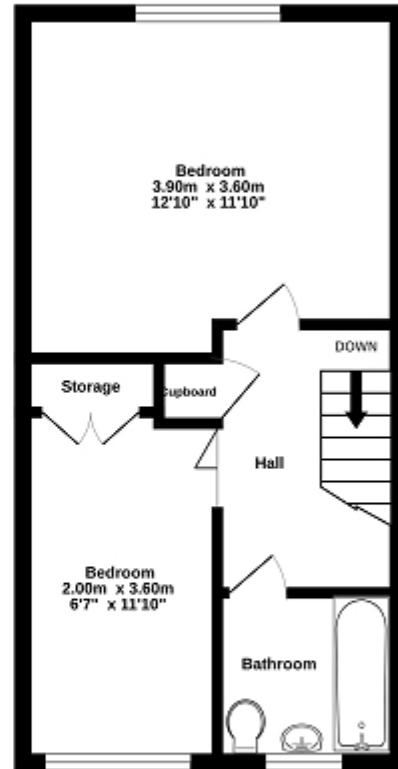
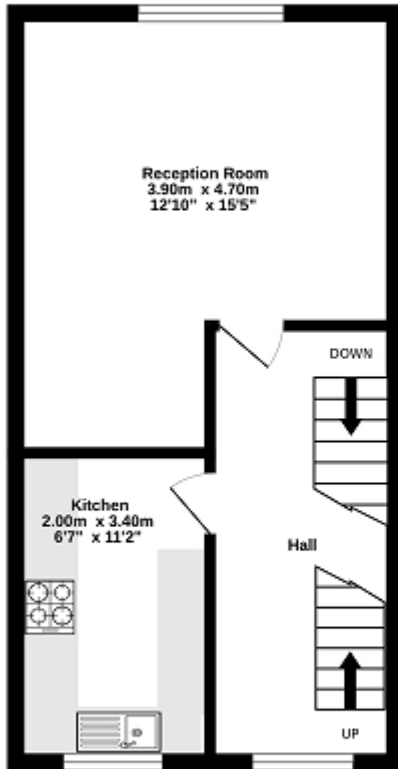
LEASE IN EXCESS OF 900 YEARS

CUL DE SAC LOCATION

NO FORWARD CHAIN

1st floor

2nd floor



Whilst every attempt has been made to ensure the accuracy of the floorplan contained here, measurements of doors, windows, rooms and any other items are approximate and no responsibility is taken for any error, omission or mis-statement. This plan is for illustrative purposes only and should be used as such by any prospective purchaser. The services, systems and appliances shown have not been tested and no guarantee as to their operability or efficiency can be given.
Made with Metapix ©2024

| Energy Efficiency Rating | | |
|---|----------------------------|-----------|
| | Current | Potential |
| Very energy efficient - lower running costs | | |
| (92+) A | | |
| (81-91) B | | |
| (69-80) C | 76 | 79 |
| (55-68) D | | |
| (39-54) E | | |
| (21-38) F | | |
| (1-20) G | | |
| Not energy efficient - higher running costs | | |
| England, Scotland & Wales | EU Directive 2002/91/EC | |

The energy efficiency rating is a measure of the overall efficiency of a home. The higher the rating the more energy efficient the home is and the lower the fuel bills will be.