

**103 MANSFIELD ROAD
CHESSINGTON
SURREY
KT9 2PX
OFFERS IN EXCESS OF
£325,000**

GROUND FLOOR MAISONETTE

TWO DOUBLE BEDROOMS

9'10 X 8'10 MODERN KITCHEN

13'3 X 13'2 LIVING ROOM

DOUBLE GLAZED WINDOWS

GAS CENTRAL HEATING

MODERN BATHROOM SUITE

34' X 33' SOUTH FACING GARDEN

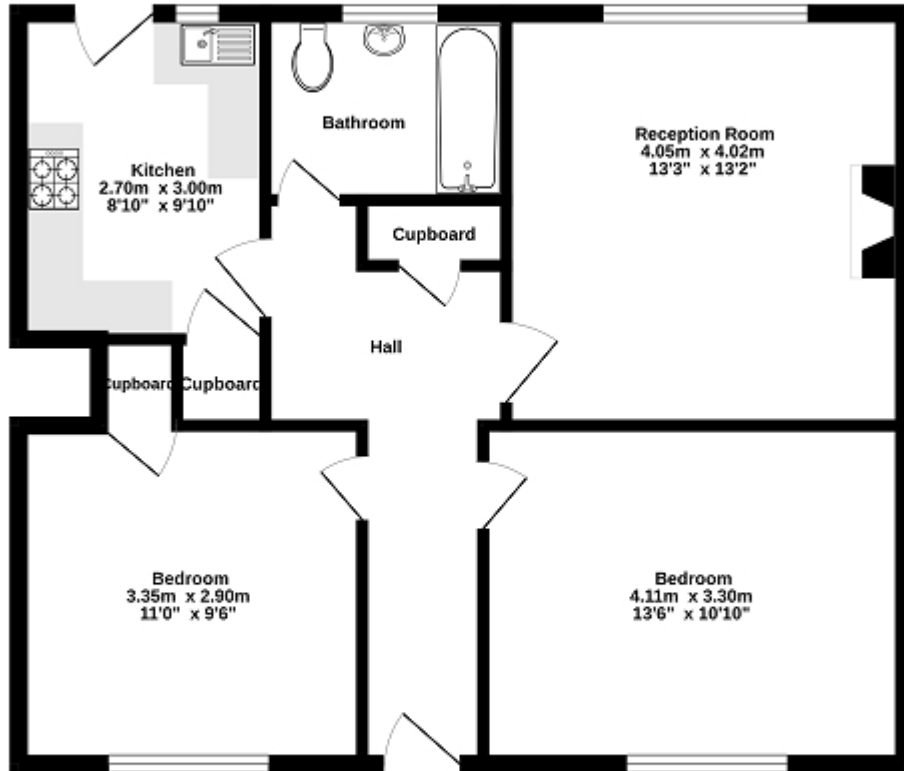
WELL PRESENTED

AN IDEAL FIRST TIME BUY

Telephone
020 8397 5151

Email
chessington@compasseea.co.uk
Website
www.compasseea.co.uk

Ground Floor
69.0 sq.m. (743 sq.ft.) approx.



TOTAL FLOOR AREA : 69.0 sq.m. (743 sq.ft.) approx.
 While every attempt has been made to ensure the accuracy of the floorplan contained here, measurements of doors, windows, rooms and any other items are approximate and no responsibility is taken for any error, omission or mis-statement. This plan is for illustrative purposes only and should be used as such by any prospective purchaser. The services, systems and appliances shown have not been tested and no guarantee as to their operability or efficiency can be given.
 Made with Heliplan ©2011



Energy Efficiency Rating		
	Current	Potential
<i>Very energy efficient - lower running costs</i>		
(92+) A		
(81-91) B		
(69-80) C		73
(55-68) D	66	
(39-54) E		
(21-38) F		
(1-20) G		
<i>Not energy efficient - higher running costs</i>		
England, Scotland & Wales	EU Directive 2002/91/EC	

The energy efficiency rating is a measure of the overall efficiency of a home. The higher the rating the more energy efficient the home is and the lower the fuel bills will be.