



**29 CHESHIRE GARDENS
CHESSINGTON
SURREY
KT9 2PR
£525,000**

EXTENDED LINK TERRACED HOUSE

THREE BEDROOMS

TWO RECEPTION AREAS

14'1 X 10'6 KITCHEN

FOUR PIECE BATHROOM SUITE

DOUBLE GLAZED WINDOWS

GAS CENTRAL HEATING

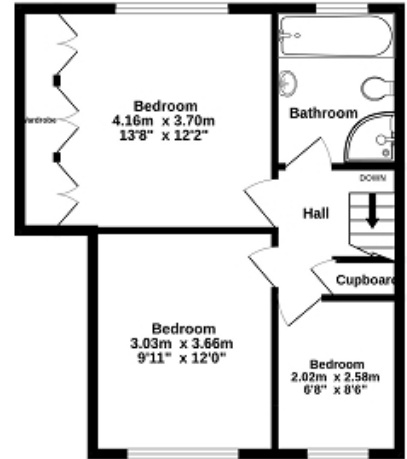
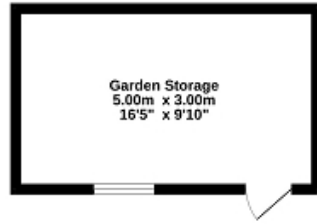
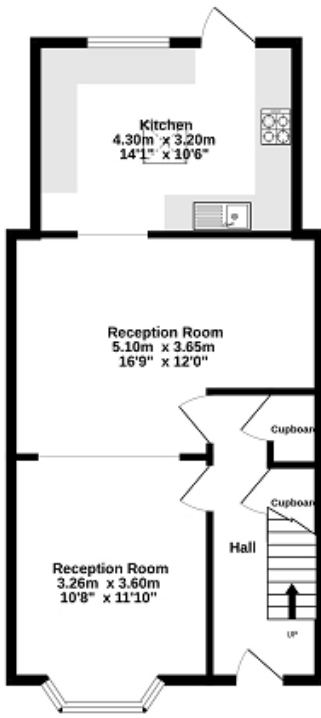
56' X 19' EASTERLY FACING REAR GARDEN

OFF STREET PARKING

NO FORWARD CHAIN

Ground floor

1st floor



TOTAL FLOOR AREA : 94.3 sq.m. (1015 sq.ft.) approx.

Whilst every attempt has been made to ensure the accuracy of the floorplan contained here, measurements of doors, windows, rooms and any other items are approximate and no responsibility is taken for any error, omission or mis-statement. This plan is for illustrative purposes only and should be used as such by any prospective purchaser. The services, systems and appliances shown have not been tested and no guarantee as to their operability or efficiency can be given.
Made with Metropix ©2024



Energy Efficiency Rating

	Current	Potential
<i>Very energy efficient - lower running costs</i>		
(92+) A		
(81-91) B		
(69-80) C		79
(55-68) D	63	
(39-54) E		
(21-38) F		
(1-20) G		
<i>Not energy efficient - higher running costs</i>		
England, Scotland & Wales	EU Directive 2002/91/EC	

The energy efficiency rating is a measure of the overall efficiency of a home. The higher the rating the more energy efficient the home is and the lower the fuel bills will be.