



**10 ORCHARD ROAD
CHESSINGTON
SURREY
KT9 1AN
£475,000**

EXTENDED END TERRACE HOUSE

THREE BEDROOMS

18'8 X 10'3 LIVING ROOM

17'1 X 8'1 DINING ROOM

11'2 X 8' KITCHEN

DOUBLE GLAZED WINDOWS

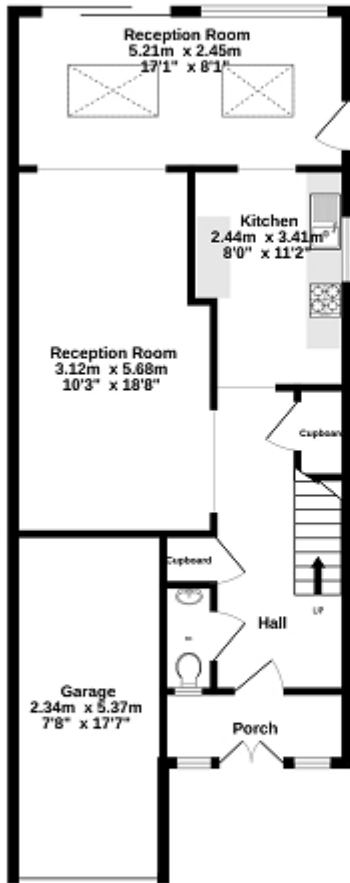
GAS CENTRAL HEATING

30' SOUTH WESTERLY FACING GARDEN

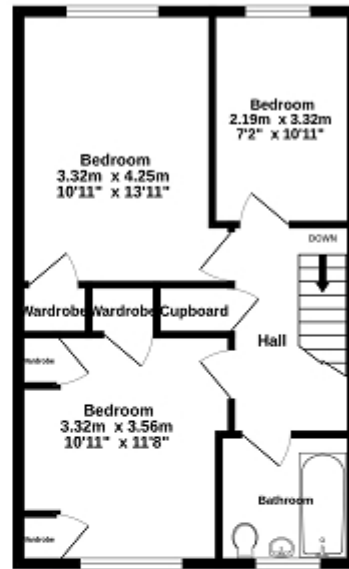
GARAGE AND OFF STREET PARKING

SOUGHT AFTER LOCATION

Ground Floor
68.1 sq.m. (701 sq.ft.) approx.



1st Floor
44.8 sq.m. (482 sq.ft.) approx.



TOTAL FLOOR AREA: 109.9 sq.m. (1183 sq.ft.) approx.

Whilst every attempt has been made to ensure the accuracy of the floorplan contained herein, measurements of doors, windows, rooms and any other items are approximate and no responsibility is taken for any errors, omissions or misstatements. This plan is for illustrative purposes only and should be used as such by any prospective purchaser. The services, systems and appliances shown have not been tested and no guarantee as to their operability or efficiency can be given.
Made with floorplan 02024



Energy Efficiency Rating

	Current	Potential
Very energy efficient - lower running costs		
(92+) A		
(81-91) B		83
(69-80) C		
(55-68) D	67	
(39-54) E		
(21-38) F		
(1-20) G		
Not energy efficient - higher running costs		
England, Scotland & Wales	EU Directive 2002/91/EC	

The energy efficiency rating is a measure of the overall efficiency of a home. The higher the rating the more energy efficient the home is and the lower the fuel bills will be.