



**10B ORCHARD ROAD
CHESSINGTON
SURREY
KT9 1AN
£475,000**

EXTENDED TERRACED HOUSE

THREE BEDROOMS

18'8 X 10'9 LIVING ROOM

15'7 X 8'1 DINING ROOM

11'8 X 7'10 KITCHEN

DOUBLE GLAZED WINDOWS

UNDER FLOOR AND ELECTRIC HEATING

55' SOUTH FACING GARDEN

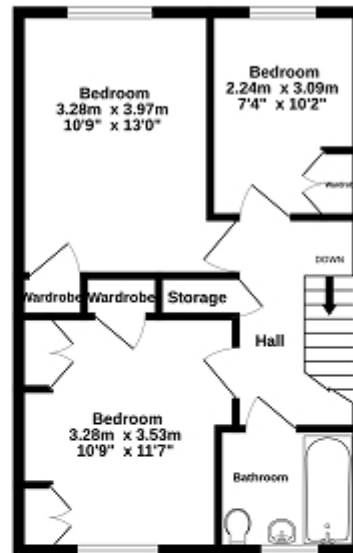
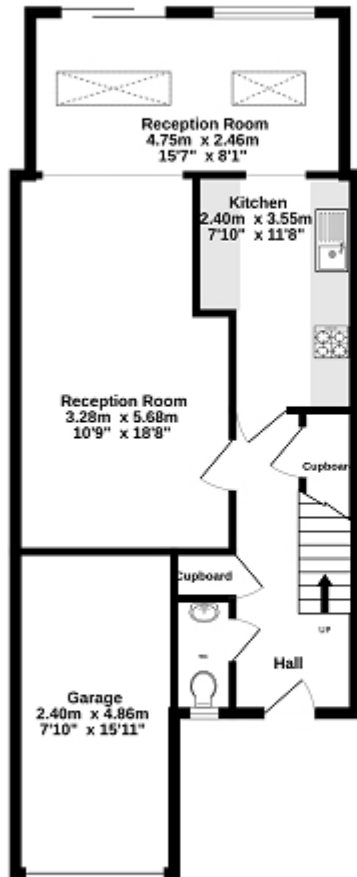
SOME UPDATING REQUIRED

SOUGHT AFTER LOCATION

NO FORWARD CHAIN

Ground Floor
59.1 sq.m. (637 sq.ft.) approx.

1st Floor
41.7 sq.m. (449 sq.ft.) approx.



TOTAL FLOOR AREA : 100.8 sq.m. (1086 sq ft.) approx.

Whilst every attempt has been made to ensure the accuracy of the floorplan contained here, measurements of doors, windows, rooms and any other areas are approximate and no responsibility is taken for any error, omission or mis-statement. This plan is for illustrative purposes only and should be used as such by any prospective purchaser. The services, systems and appliances shown have not been tested and no guarantee as to their operability or efficiency can be given.
Made with floorplan 12021



Energy Efficiency Rating		
	Current	Potential
Very energy efficient - lower running costs		
(92+) A		
(81-91) B		83
(69-80) C		
(55-68) D	57	
(39-54) E		
(21-38) F		
(1-20) G		
Not energy efficient - higher running costs		
England, Scotland & Wales	EU Directive 2002/91/EC	

The energy efficiency rating is a measure of the overall efficiency of a home. The higher the rating the more energy efficient the home is and the lower the fuel bills will be.