



**11 HALFORD COURT
7 GREEN LANE
CHESSINGTON, SURREY
KT9 2EE
OFFERS IN EXCESS OF
£285,000**

FIRST FLOOR PURPOSE BUILT FLAT

TWO BEDROOMS

18'6 X 13'11 LIVING ROOM

11'7 X 7'3 KITCHEN

WHITE BATHROOM SUITE

DOUBLE GLAZED WINDOWS

GAS CENTRAL HEATING

13'11 X 4'1 BALCONY

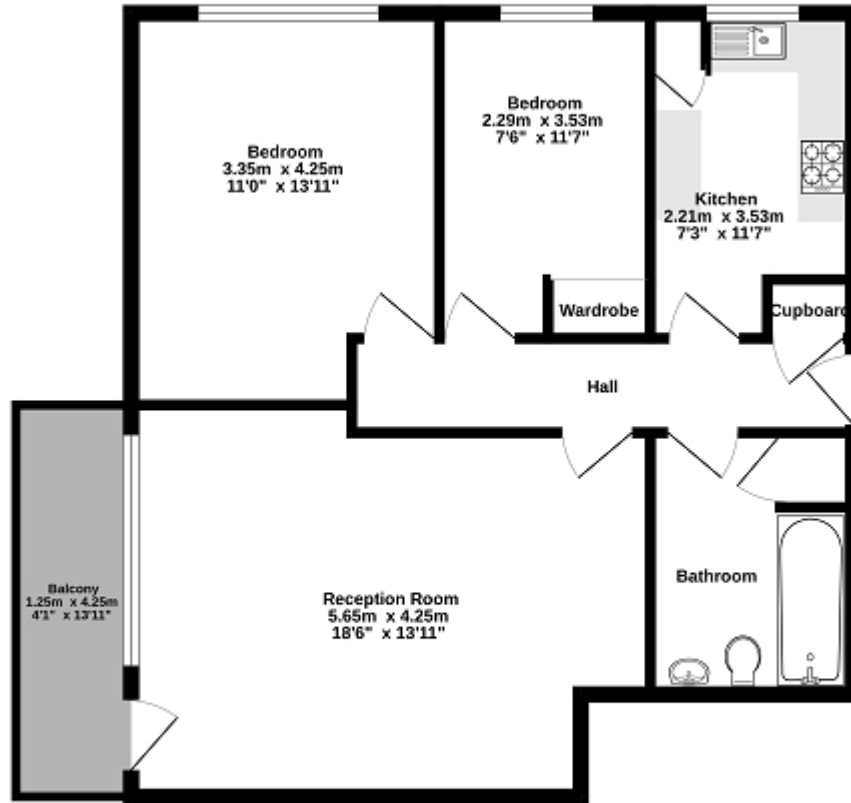
SHARE OF FREEHOLD

SOME UPDATING REQUIRED

NO FORWARD CHAIN



Ground Floor
63.5 sq.m. (684 sq.ft.) approx.



TOTAL FLOOR AREA: 63.5 sq.m. (684 sq.ft.) approx.
 Whilst every attempt has been made to ensure the accuracy of the floorplan contained herein, measurements of doors, windows, rooms and any other items are approximate and no responsibility is taken for any errors or omissions. This plan is for illustrative purposes only and should be used as such by any prospective purchaser. The services, systems and appliances shown have not been tested and no guarantee as to their operability or efficiency can be given.
 Made with Metlogix 02/04

Energy Efficiency Rating		
	Current	Potential
<i>Very energy efficient - lower running costs</i>		
(92+) A		
(81-91) B		
(69-80) C		79
(55-68) D	64	
(39-54) E		
(21-38) F		
(1-20) G		
<i>Not energy efficient - higher running costs</i>		
England, Scotland & Wales	EU Directive 2002/91/EC	

The energy efficiency rating is a measure of the overall efficiency of a home. The higher the rating the more energy efficient the home is and the lower the fuel bills will be.