



**68 COURT FARM AVENUE
EPSOM
SURREY
KT19 0HF
£2,400 MONTHLY**

EXTENDED SEMI DETACHED HOUSE

THREE/FOUR BEDROOMS

25'5 X 17'9 L-SHAPED KITCHEN DINING ROOM

12'2 X 11'6 RECEPTION ROOM

BATHROOM AND SHOWER ROOM

DOUBLE GLAZED WINDOWS

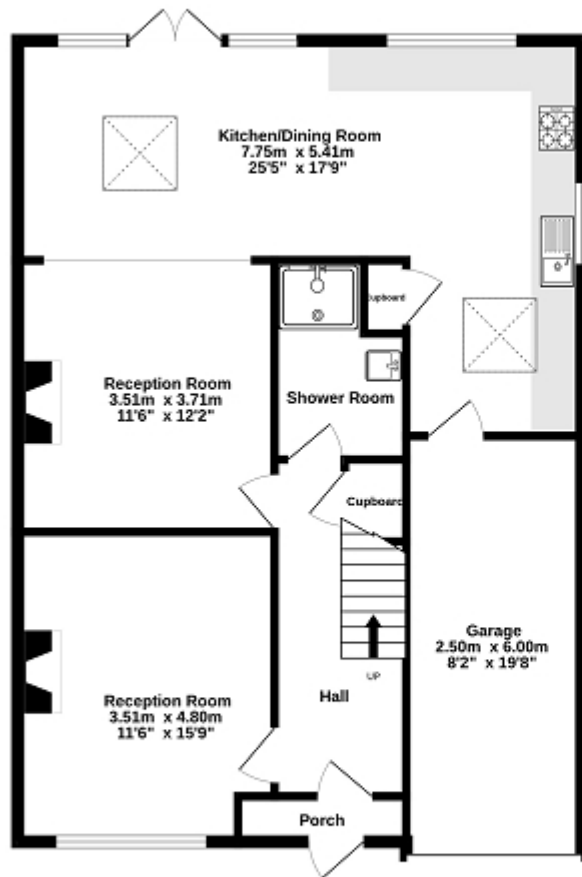
GAS CENTRAL HEATING

FRONT AND REAR GARDENS

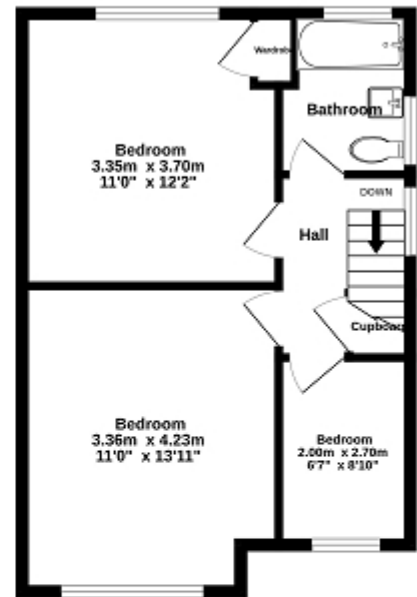
GARAGE AND OFF STREET PARKING

AVAILABLE FROM 22ND DECEMBER 2023

Ground floor




1st floor



Whilst every attempt has been made to ensure the accuracy of the floor plan contained here, measurements of doors, windows, rooms and any other items are approximate and no responsibility is taken for any error, omission or mis-statement. This plan is for illustrative purposes only and should be used as such by any prospective purchaser. The services, systems and appliances shown have not been tested and no guarantee as to their operability or efficiency can be given.
Made with Metropix 6/2023

Energy Efficiency Rating

	Current	Potential
Very energy efficient - lower running costs		
(92+) A		
(81-91) B		
(69-80) C		79
(55-68) D		
(39-54) E	53	
(21-38) F		
(1-20) G		
Not energy efficient - higher running costs		
England, Scotland & Wales EU Directive 2002/91/EC 		

The energy efficiency rating is a measure of the overall efficiency of a home. The higher the rating the more energy efficient the home is and the lower the fuel bills will be.