



**139 GILDERS ROAD  
CHESSINGTON  
SURREY  
KT9 2EB  
£339,950**

**EXTENDED TERRACED HOUSE**

**TWO BEDROOMS**

**12'3 X 10'9 LIVING ROOM**

**13'5 X 8'3 DINING ROOM**

**8'8 X 5'7 KITCHEN**

**DOUBLE GLAZED WINDOWS**

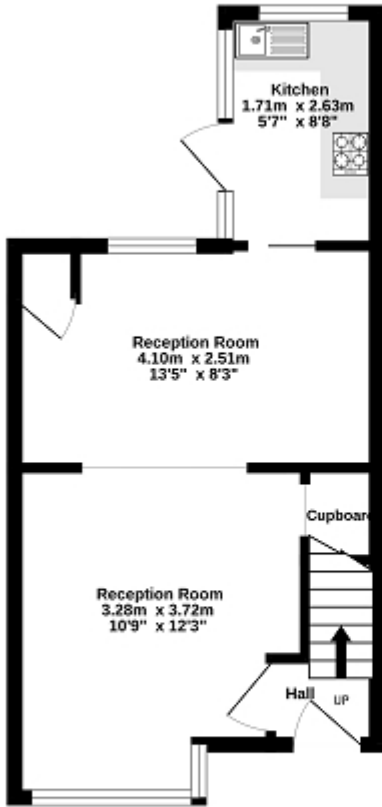
**GAS CENTRAL HEATING**

**66' SOUTH EASTERLY GARDEN**

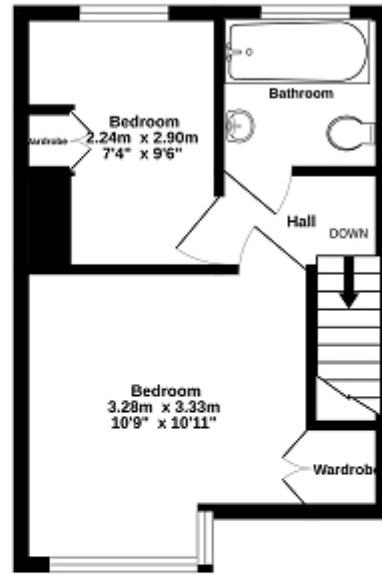
**IN NEED OF UPDATING**

**NO FORWARD CHAIN**

Ground Floor  
28.8 sq.m. (310 sq.ft.) approx.



1st Floor  
23.8 sq.m. (256 sq.ft.) approx.



TOTAL FLOOR AREA: 52.6 sq.m. (567 sq.ft.) approx.

Whilst every attempt has been made to ensure the accuracy of the floorplan contained here, measurements of doors, windows, rooms and any other items are approximate and no responsibility is taken for any error, omission or mis-statement. This plan is for illustrative purposes only and should be used as such by any prospective purchaser. The services, systems and appliances shown have not been tested and no guarantee as to their operability or efficiency can be given.  
Made with Metropix (2022)



### Energy Efficiency Rating

	Current	Potential
Very energy efficient - lower running costs		
(92+) <b>A</b>		
(81-91) <b>B</b>		90
(69-80) <b>C</b>		
(55-68) <b>D</b>	61	
(39-54) <b>E</b>		
(21-38) <b>F</b>		
(1-20) <b>G</b>		
Not energy efficient - higher running costs		
<b>England, Scotland &amp; Wales</b>	EU Directive 2002/91/EC	

The energy efficiency rating is a measure of the overall efficiency of a home. The higher the rating the more energy efficient the home is and the lower the fuel bills will be.