



**18 MOOR LANE  
CHESSINGTON  
SURREY  
KT9 1BS  
OFFERS IN EXCESS OF  
£625,000**

**EXTENDED SEMI DETACHED HOUSE**

**FOUR BEDROOMS**

**27'6 X 10'2 LOUNGE DINING ROOM**

**9'6 X 8' MODERN KITCHEN**

**BATHROOM & SHOWER ROOM**

**DOUBLE GLAZED WINDOWS**

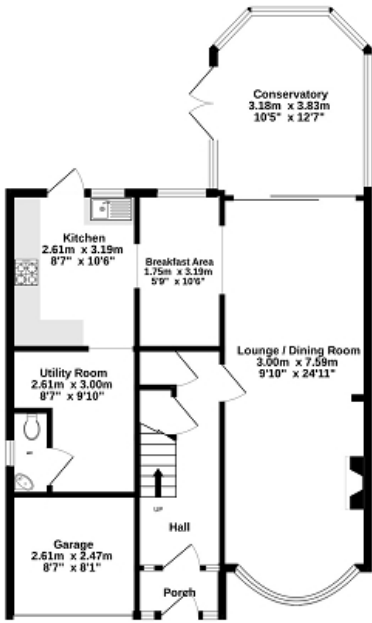
**GAS CENTRAL HEATING**

**31' X 25' WESTERLY FACING GARDEN**

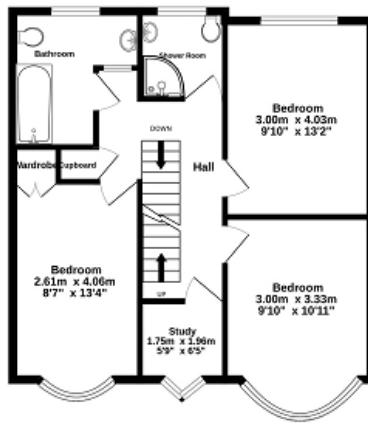
**OFF STREET PARKING**

**NO FORWARD CHAIN**

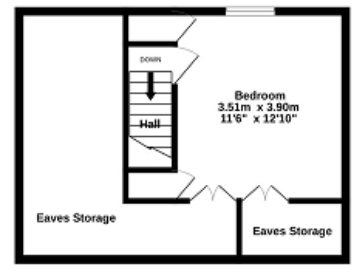
Ground Floor  
72.8 sq.m. (783 sq.ft.) approx.



1st Floor  
56.8 sq.m. (611 sq.ft.) approx.



2nd Floor  
34.2 sq.m. (366 sq.ft.) approx.



TOTAL FLOOR AREA : 163.8 sq.m. (1763 sq.ft.) approx.

Whilst every attempt has been made to ensure the accuracy of the floorplan contained here, measurements of doors, windows, rooms and any other items are approximate and no responsibility is taken for any error, omission or mis-statement. This plan is for illustrative purposes only and should be used as such by any prospective purchaser. The services, systems and appliances shown have not been tested and no guarantee as to their operability or efficiency can be given.  
Made with Metropix ©2023

Energy Efficiency Rating		
	Current	Potential
Very energy efficient - lower running costs		
(92+) <b>A</b>		
(81-91) <b>B</b>		84
(69-80) <b>C</b>		
(55-68) <b>D</b>	56	
(39-54) <b>E</b>		
(21-38) <b>F</b>		
(1-20) <b>G</b>		
Not energy efficient - higher running costs		
<b>England, Scotland &amp; Wales</b>	EU Directive 2002/91/EC	

The energy efficiency rating is a measure of the overall efficiency of a home. The higher the rating the more energy efficient the home is and the lower the fuel bills will be.