



**1 MALTBY ROAD
CHESSINGTON
SURREY
KT9 2BX**

£2,300 MONTHLY

EXTENDED END TERRACE HOUSE

UNFURNISHED

THREE BEDROOMS

25'7 X 15'7 L-SHAPED KITCHEN FAMILY DINING ROOM

MODERN FOUR PIECE BATHROOM

DOUBLE GLAZED WINDOWS

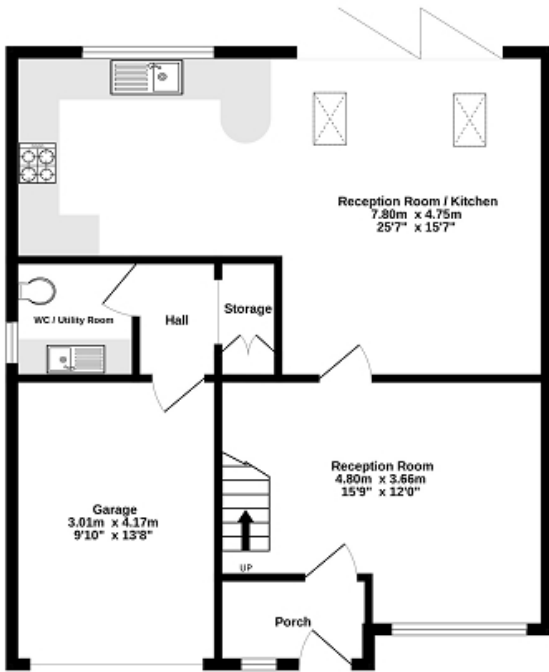
GAS CENTRAL HEATING

50' REAR GARDEN

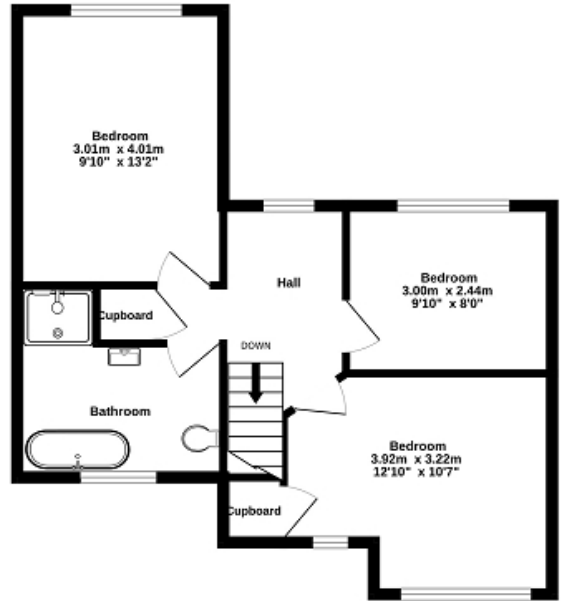
OFF STREET PARKING

AVAILABLE FROM 2ND OCTOBER 2023

Ground Floor
68.2 sq.m. (734 sq.ft.) approx.



1st Floor
45.9 sq.m. (495 sq.ft.) approx.



TOTAL FLOOR AREA : 114.2 sq.m. (1229 sq.ft.) approx.

Whilst every attempt has been made to ensure the accuracy of the floorplan contained here, measurements of doors, windows, rooms and any other items are approximate and no responsibility is taken for any error, omission or mis-statement. This plan is for illustrative purposes only and should be used as such by any prospective purchaser. The services, systems and appliances shown have not been tested and no guarantee as to their operability or efficiency can be given.
Made with Metropix ©2023

Energy Efficiency Rating		
	Current	Potential
Very energy efficient - lower running costs		
(92+) A		
(81-91) B		85
(69-80) C	70	
(55-68) D		
(39-54) E		
(21-38) F		
(1-20) G		
Not energy efficient - higher running costs		
England, Scotland & Wales	EU Directive 2002/91/EC	

The energy efficiency rating is a measure of the overall efficiency of a home. The higher the rating the more energy efficient the home is and the lower the fuel bills will be.