



**59 MOUNT ROAD
CHESSINGTON
SURREY
KT9 1JQ
£425,000**

EXTENDED END TERRACE HOUSE

THREE BEDROOMS

TWO RECEPTION ROOMS

GALLEY KITCHEN

PART DOUBLE GLAZED

GAS CENTRAL HEATING

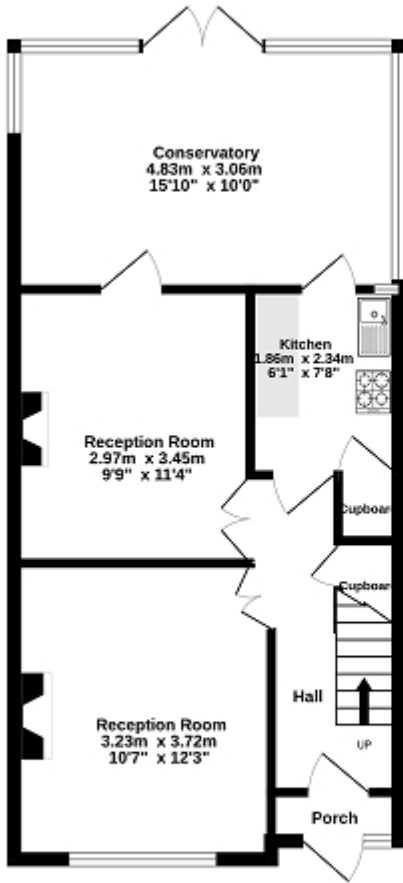
GARAGE TO THE REAR

150' REAR GARDEN

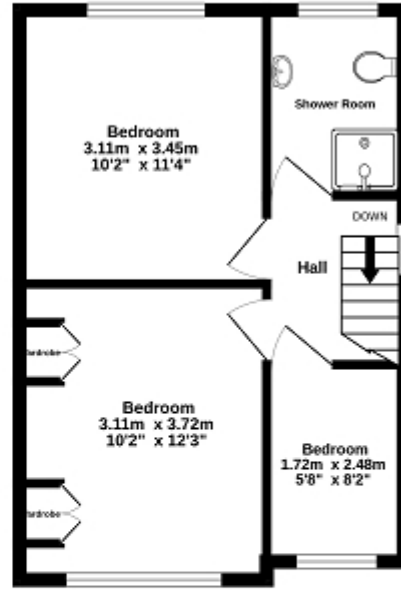
UPDATING REQUIRED

NO FORWARD CHAIN

Ground Floor
48.4 sq.m. (521 sq.ft.) approx.



1st Floor
34.3 sq.m. (369 sq.ft.) approx.



TOTAL FLOOR AREA: 82.6 sq.m. (889 sq.ft.) approx.

Whilst every attempt has been made to ensure the accuracy of the footprint contained here, measurements of doors, windows, rooms and any other items are approximate and no responsibility is taken for any error, omission or mis-statement. This plan is for illustrative purposes only and should be used as such by any prospective purchaser. The services, fixtures and appliances shown here have not been tested as it is guaranteed as to their operability or efficiency can be given.
Made with Intropic 02/023



Energy Efficiency Rating

	Current	Potential
Very energy efficient - lower running costs		
(92+) A		
(81-91) B		87
(69-80) C		
(55-68) D	64	
(39-54) E		
(21-38) F		
(1-20) G		
Not energy efficient - higher running costs		
England, Scotland & Wales	EU Directive 2002/91/EC	

The energy efficiency rating is a measure of the overall efficiency of a home. The higher the rating the more energy efficient the home is and the lower the fuel bills will be.