



**9 TUDOR CLOSE
CHESSINGTON
SURREY
KT9 1BL
OFFERS IN EXCESS OF
£500,000**

EXTENDED SEMI DETACHED HOUSE

THREE BEDROOMS

TWO RECEPTION ROOMS

8'6 X 7' KITCHEN

BATHROOM AND SHOWER ROOM

DOUBLE GLAZED WINDOWS

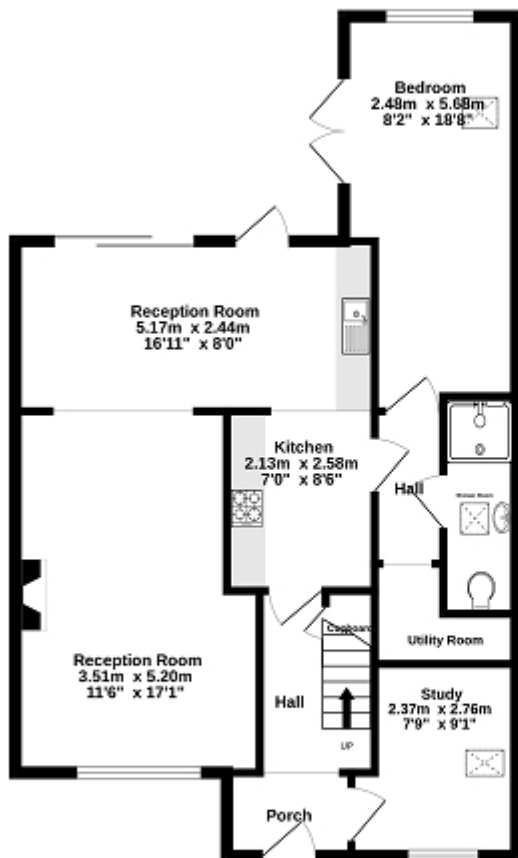
GAS CENTRAL HEATING

38' X 25' WESTERLY FACING GARDEN

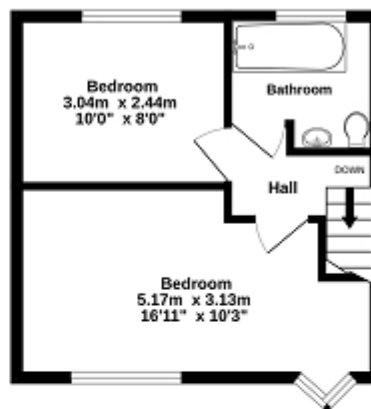
OFF STREET PARKING

NO FORWARD CHAIN

Ground Floor
67.7 sq.m. (729 sq.ft.) approx.



1st Floor
27.0 sq.m. (291 sq.ft.) approx.



TOTAL FLOOR AREA: 94.7 sq.m. (1020 sq.ft.) approx.

While every attempt has been made to ensure the accuracy of the floorplan contained here, measurements of doors, windows, rooms and any other items are approximate and no responsibility is taken for any error, omission or mis-statement. This plan is for illustrative purposes only and should be used as such by any prospective purchaser. The services, systems and appliances shown have not been tested and no guarantee as to their operability or efficiency can be given.
Made with Intropix ©2023

Energy Efficiency Rating

	Current	Potential
Very energy efficient - lower running costs		
(92+) A		
(81-91) B		
(69-80) C		77
(55-68) D	60	
(39-54) E		
(21-38) F		
(1-20) G		
Not energy efficient - higher running costs		
England, Scotland & Wales	EU Directive 2002/91/EC	

The energy efficiency rating is a measure of the overall efficiency of a home. The higher the rating the more energy efficient the home is and the lower the fuel bills will be.