



**3 WHITEHALL CRESCENT
CHESSINGTON
SURREY
KT9 1NF
£515,000**

SEMI DETACHED HOUSE

THREE BEDROOMS

15'5 X 9'10 LIVING ROOM

9'10 X 8'6 DINING ROOM

GAS CENTRAL HEATING

DOUBLE GLAZING

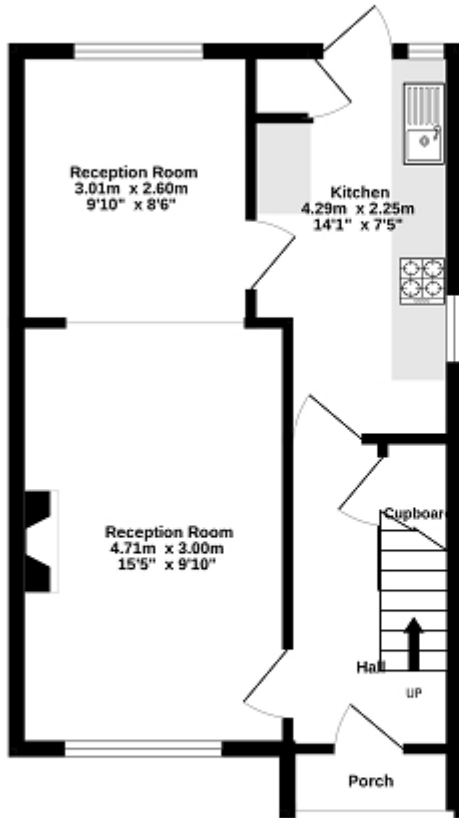
OFF STREET PARKING

POTENTIAL TO EXTEND (STPP)

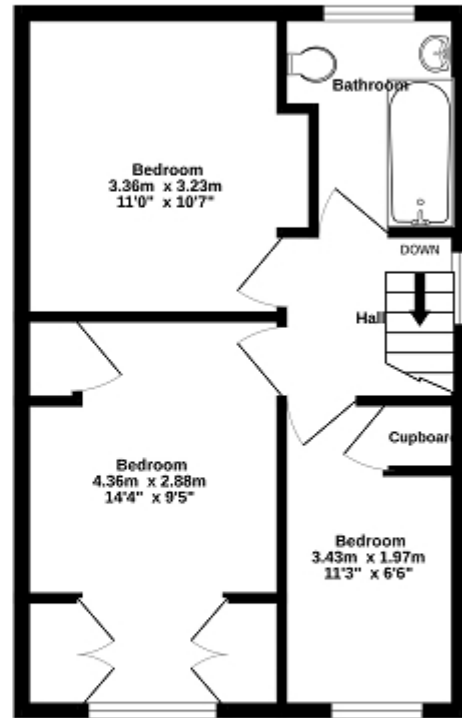
NO ONWARD CHAIN

SOME UPDATING REQUIRED

Ground Floor
38.3 sq.m. (412 sq.ft.) approx.



1st Floor
37.4 sq.m. (403 sq.ft.) approx.



TOTAL FLOOR AREA : 75.7 sq.m. (815 sq.ft.) approx.

Whilst every attempt has been made to ensure the accuracy of the floorplan contained here, measurements of doors, windows, rooms and any other items are approximate and no responsibility is taken for any error, omission or mis-statement. This plan is for illustrative purposes only and should be used as such by any prospective purchaser. The services, systems and appliances shown have not been tested and no guarantee as to their operability or efficiency can be given.
Made with Metropix ©2023



Energy Efficiency Rating

| | Current | Potential |
|---|----------------------------|-----------|
| Very energy efficient - lower running costs | | |
| (92+) A | | |
| (81-91) B | | |
| (69-80) C | | 72 |
| (55-68) D | | |
| (39-54) E | | |
| (21-38) F | 37 | |
| (1-20) G | | |
| Not energy efficient - higher running costs | | |
| England, Scotland & Wales | EU Directive 2002/91/EC | |

The energy efficiency rating is a measure of the overall efficiency of a home. The higher the rating the more energy efficient the home is and the lower the fuel bills will be.