



**6 GARRISON LANE
CHESSINGTON
SURREY
KT9 2LB
£350,000**

GROUND FLOOR MAISONETTE

TWO DOUBLE BEDROOMS

15'3 X 11'11 LIVING ROOM

10' X 8' MODERN KITCHEN

MODERN SHOWER ROOM

DOUBLE GLAZED WINDOWS

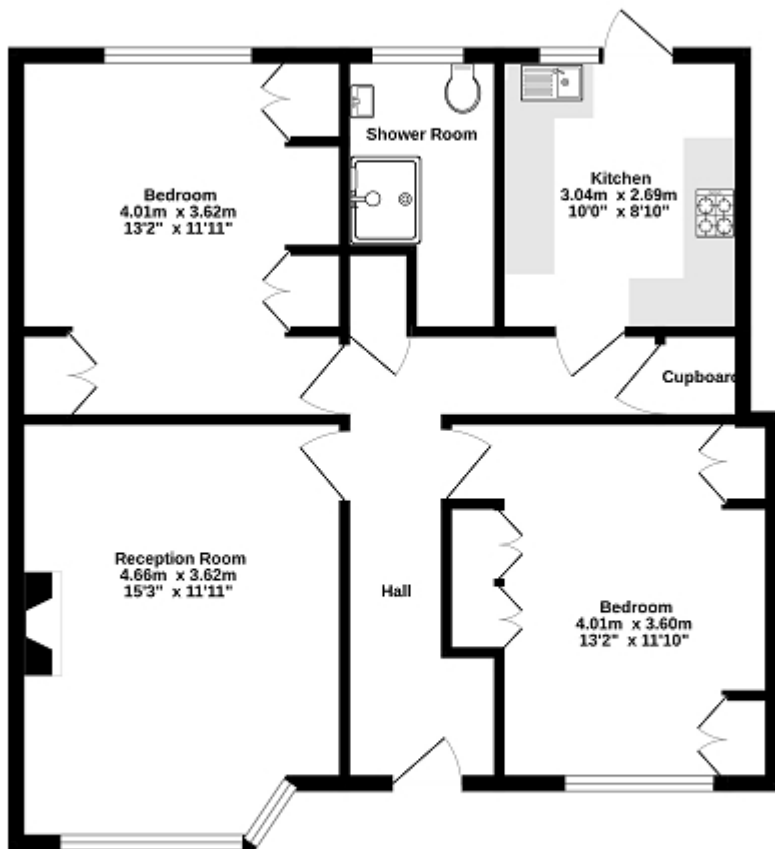
GAS CENTRAL HEATING

FRONT AND REAR GARDENS

OFF STREET PARKING

AN IDEAL FIRST TIME BUY

Ground Floor
66.9 sq.m. (720 sq.ft.) approx.



TOTAL FLOOR AREA : 66.9 sq.m. (720 sq.ft.) approx.

While every attempt has been made to ensure the accuracy of the floorplan contained here, measurements of doors, windows, rooms and any other items are approximate and no responsibility is taken for any error, omission or misstatement. This plan is for illustrative purposes only and should be used as such by any prospective purchaser. The services, systems and appliances shown have not been tested and no guarantee as to their operability or efficiency can be given.
Made with MetShape 12022



Energy Efficiency Rating

| | Current | Potential |
|---|----------------------------|-----------|
| Very energy efficient - lower running costs | | |
| (92+) A | | |
| (81-91) B | | |
| (69-80) C | 74 | 77 |
| (55-68) D | | |
| (39-54) E | | |
| (21-38) F | | |
| (1-20) G | | |
| Not energy efficient - higher running costs | | |
| England, Scotland & Wales | EU Directive 2002/91/EC | |

The energy efficiency rating is a measure of the overall efficiency of a home. The higher the rating the more energy efficient the home is and the lower the fuel bills will be.